

7UHQFK 026 %DUULHU 6FKRWWN\ 5H

DO-201AD

76\$ /



Cathode Anode

Features

- ‡ \$GYDQWUHQFK WHFKQRORJ\
- ‡ /RZRUZDURGDWDJH GURS
- ‡ /RZRZURVVHV
- ‡ +LJHILFLHQF\ RSHUDWLRO
- ‡ /HDGHHLQLVK &R#6OLDQW

Applications

- ‡ '&' & RQYHUWHUV
- ‡ \$&' & GDSWRUV
- ‡ 6ZLWFKRZHXSSOLHV
- ‡ )UHHZKHHLRGLJ

Maximum ratings and electrical characteristics (T<sub>J</sub> = 25°C unless otherwise noted)

3DUDPHWHU		6\PERO	/LPLW	8QLW
0D[LPHSHVSHUNYHYURQWDJH		9550		9
0D[LPHYHURJHZDUG UFKJWHIQWG		,) \$9		\$
3HDN IRVZDURUHQW VLKDDHQZDYH VXSHULPSHUNYHSHGLRGH		,) 60	5	\$
2SHUDMXLQDQGRWRUDJH WDESHUDW		X0H 767	WR	f &
7\SLFDO WIKHULP WDDHJH		'2 \$'	5\$-&	f & :
,QVWDQWDQHRROWRUJZDUG SHGLRGH		9)	7 < 3	0\$;
	,) \$		7- f &	9
	,) \$		7- f &	
	,) \$		7- f &	
,QVWDQWDQHRXUUSHOMRQWH UDWHYHYURQWDJH		,5		
			7- f &	P\$

1RWHV

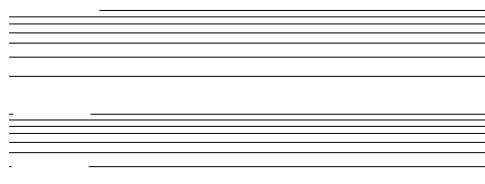
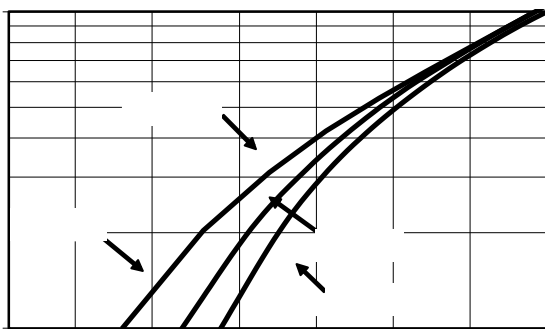
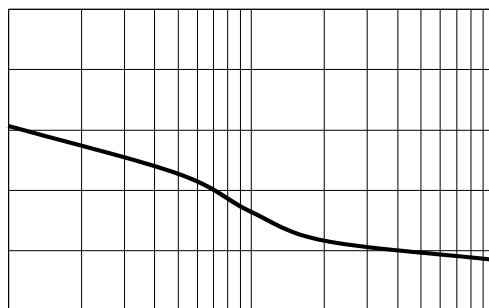
3XOVH WHVSHXOVH ZLGWK GXW\F\FOH

3XOVH WHVW 3XOPWH ZLGWK 0

RATINGS AND CHARACTERISTICS CURVES

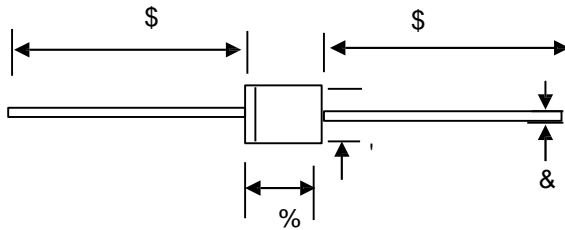
7\$

f & XQOHVQRWKB UZLVH



**PACKAGE OUTLINE DIMENSIONS**

**DO-201AD**

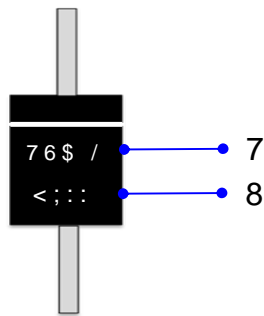


'2 \$' PHFKD QLFWD

81,7		\$	%	C	'
PP	PD[			1.4	
	PLQ			1.1	
PLO	PD[			5.1	
	PLQ				

0DUNLQJ ,QIRUPDWLRQ

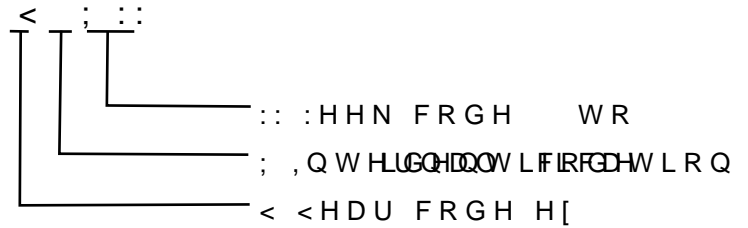
&DWKRGH



\$QRGH

73URGXFW 76\$GHO

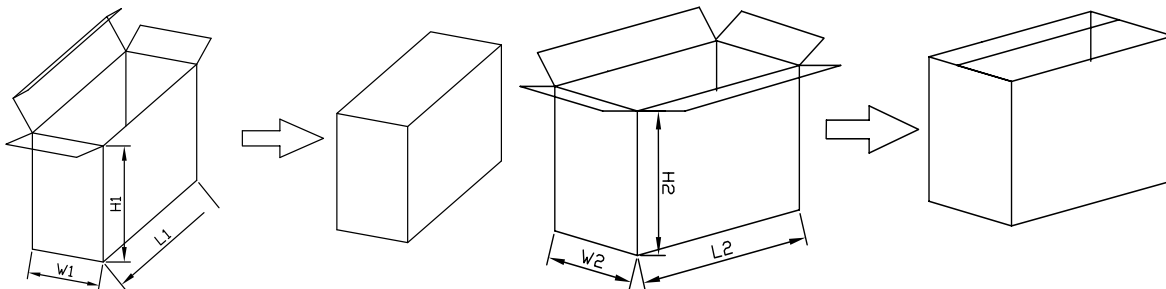
83'& LQIRUPDWLRQ



3DFNDJLQJ ,QIRUPDWLRQ

,QVLGH %R[

2XWVLGH %R[



3DFNDJLQJ ,QIRUPDWLRQ

12	81, 7	,QVLGH %R[			2XWVLGH %R[		
		/	:	+	/	:	+
6L]H	PP						