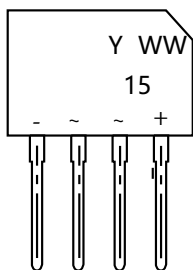


15A Surface Mount Schottky Bridge Rectifier



()
()
()
()

Features

Glass Passivated Chip Junction
 Reverse Voltage - 10 V
 Forward Current - 1 A
 High Surge Current Capability
 Thermal welding performance:
 260°C/10sec

Applications

Case: GBU
 Terminals: Solderable Per MIL-STD-750

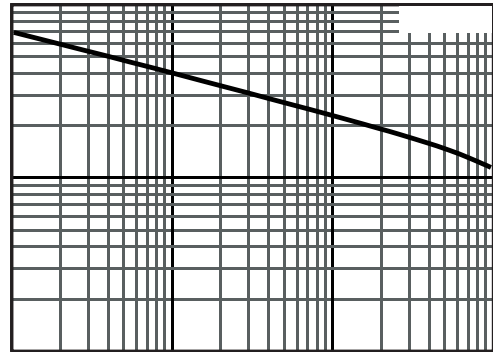
		KGBU1510	
		15	
		2	
7.5		1	
()		70	
		9.0	
		1.5	

KGBU1510

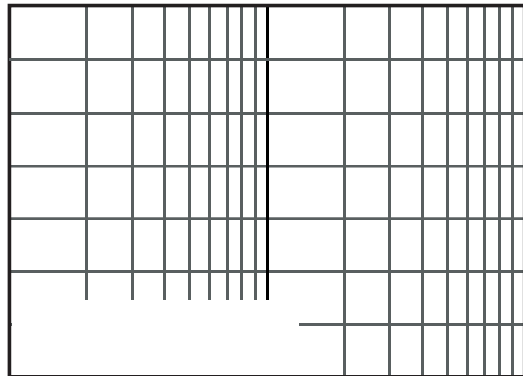
RATINGS AND CHARACTERISTICS CURVES

If, Average Forward Current (A)

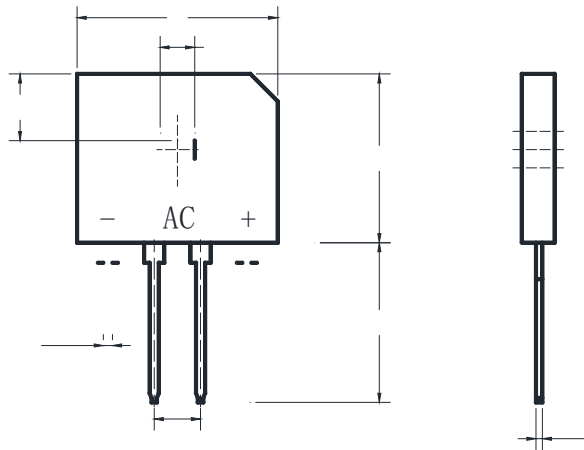
Tc, Case Temp (°C)



Ir, Reverse Current (A)



VR, Reverse Voltage (Volts)



Dimensions in millimeters